



## MRPS22 Antibody

**E307526****Product description:**

Formulation: MRPS22 antibody purified by protein affinity column containing 1% BSA and 0.02% NaN<sub>3</sub>

Catalog No.:E307526

Size: 100ug/200ul

**Source:**

Rabbit polyclonal MRPS22 <sup>(1)</sup> antibody was raised against a recombinate human MRPS22 protein 120-355aa (BC009296).

**Species Reactivity:**

Reacts with: Human

Predicted: mus, rat

Not yet tested in other species.

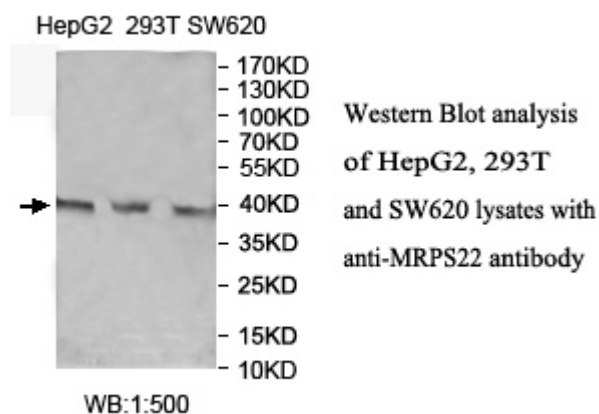
**Application:**

For research use only

ELISA titer: 1:20,000-1:80,000

Western blot analysis: 1:200-1:1,000

Optimal dilutions/concentrations should be determined by the end use

**Dilution instruction and storage:**

Already reconstituted in 200ul sterile H<sub>2</sub>O. The antibody is stable for at least one year when stored at -20°C after reconstitution.

Avoid repeated freeze/thaw cycles.

.

**Reference:**

(1) Melka,M.G., Bernard,M., Mahboubi,A.,et al. Genome-wide scan for loci of adolescent obesity and their relationship with blood pressure. J. Clin. Endocrinol. Metab. 97 (1), E145-E150 (2012)

**For Research Use Only**