



MTFR1 Antibody

E307555**Product description:**

Formulation: MTFR1 antibody purified by protein affinity column containing 1% BSA and 0.02% NaN₃

Catalog No.:E307555

Size: 100ug/200ul

Source:

Rabbit polyclonal MTFR1 ⁽¹⁾ antibody was raised against a recombinate human MTFR1 protein 13-180aa (BC036116).

Species Reactivity:

Reacts with: Human

Predicted: rat, mus

Not yet tested in other species.

Application:

For research use only

ELISA titer: 1:20,000-1:80,000

Western blot analysis: 1:200-1:1,000

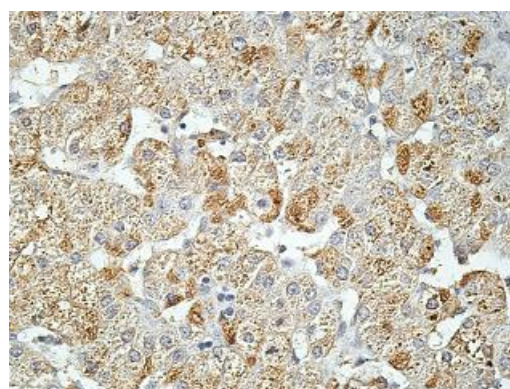
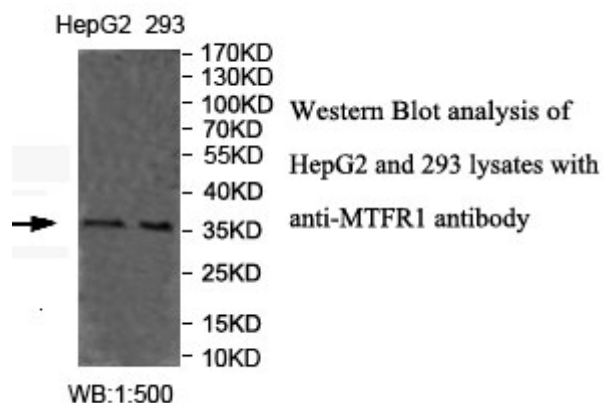
Immunohistochemistry: 1:100-1:500

Optimal dilutions/concentrations should be determined by the end use

Dilution instruction and storage:

Already reconstituted in 200ul sterile H₂O. The antibody is stable for at least one year when stored at -20°C after reconstitution.

Avoid repeated freeze/thaw cycles.



Immunohistochemical staining of formalin-fixed paraffin-embedded fetal liver showing cytoplasmic staining with anti-MTFR1 antibody at a dilution of 1/100

Reference:

(1) Monticone,M., Tonachini,L., Tavella,S., et al. Impaired expression of genes coding for reactive oxygen species scavenging enzymes in testes of Mtf1/Chppr-deficient mice. Reproduction 134 (3), 483-492 (2007)

For Research Use Only