



LDHA Antibody

-20-PU

E551038

CATALOG #

E551038-20-PU

SOURCE

Purified mouse monoclonal antibody generated using *E.coli* expressed recombinant protein LDHA as immunogen.

ANTIGEN

Recombinant protein corresponding to full length LDHA .

NCBI KEY

LDHA [GeneID: 3939; Nucleotide: NM_005566.3; Protein: NP_005557.1]

CLASS

Mouse IgG_{2b}

SPECIFICITY

Anti-LDHA recognizes LDHA expression in Hella whole cell lysate.

APPLICATIONS

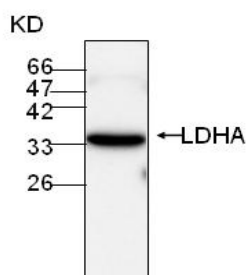
Anti-LDHA can be used in **Elisa** and **WB-Ce**.

PRODUCT

Each vial contains 100 µg IgG in 100 µl of citrate-tris-HCl buffer pH7.0 with 0.02% Proclin 300.

STORAGE

The antibody may be stored at -20°C for one year in its original formulation. Additionally, antibody may be stored at 2°C to 8°C for up to 1 month without detectable loss of activity. **Avoid repeated freeze-thaw cycles of the diluted antibody.**

DATA

WB (1:500) analysis of LDHA expression in Hella whole cell lysate with Anti-LDHA ([E551038-20-PU](#)).

For Research Use Only