



CCL2 Antibody

-5-PU

E551049

CATALOG #

E551049-5-PU

SOURCE

Purified mouse monoclonal antibody generated using *E.coli* expressed recombinant protein CCL2 as immunogen.

ANTIGEN

Recombinant protein corresponding to full length CCL2 .

NCBI KEY

CCL2 [GeneID: 6347; Nucleotide: NM_002982.3; Protein: NP_002973.1]

CLASS

Mouse IgG_{2b}

SPECIFICITY

Anti-CCL2 recognizes recombinant protein CCL2.

APPLICATIONS

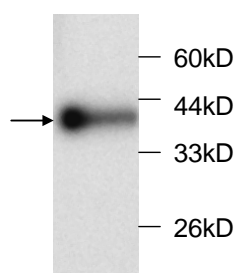
Anti-CCL2 can be used in **ELISA** and **WB-Re**.

PRODUCT

Each vial contains 100 µg IgG in 100 µl of citrate-tris-HCl buffer pH7.0 with 0.02% Proclin 300.

STORAGE

The antibody may be stored at -20°C for one year in its original formulation. Additionally, antibody may be stored at 2°C to 8°C for up to 1 month without detectable loss of activity. **Avoid repeated freeze-thaw cycles of the diluted antibody.**

DATA

WB (1:1000) analysis of recombinant protein CCL2
with Anti-CCL2 ([E551049-5-PU](#)).

For Research Use Only