



GOT2 Antibody

-14-PU

E551058

CATALOG #

E551058-14-PU

SOURCE

Purified mouse monoclonal antibody generated using *E.coli* expressed recombinant protein GOT2 as immunogen.

ANTIGEN

Recombinant protein corresponding to fragment (aa/225-430) GOT2.

NCBI KEY

GOT2 [GeneID: 2806; Nucleotide: NM_002080.2; Protein: NP_002071.2]

CLASS

Mouse IgG_{2b}

SPECIFICITY

Anti-GOT2 recognizes GOT2 expression in HepG2 whole cell lysate.

APPLICATIONS

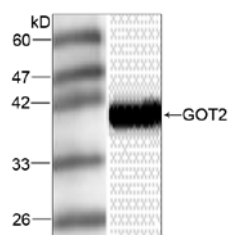
Anti-GOT2 can be used in **ELISA**, **WB-Ce** and **IHC**.

PRODUCT

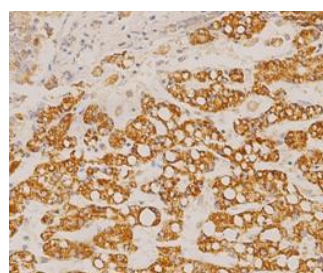
Each vial contains 100 µg IgG in 100 µl of citrate-tris-HCl buffer pH7.0 with 0.02% Proclin 300.

STORAGE

The antibody may be stored at -20°C for one year in its original formulation. Additionally, antibody may be stored at 2°C to 8°C for up to 1 month without detectable loss of activity. **Avoid repeated freeze-thaw cycles of the diluted antibody.**

DATA

WB (1:1000) analysis of GOT2 expression in HepG2 whole cell lysate with Anti-GOT2 ([E551058-14-PU](#)).



IHC (1:100 200x) analysis of GOT2 expression in liver Cancer with Anti-GOT2 ([E551058-14-PU](#)).

For Research Use Only