



## CREM Antibody

-22-PU

E552001

**CATALOG #**

E552001-22-PU

**SOURCE**

Purified mouse monoclonal antibody generated using *E.coli* expressed recombinant protein CREM as immunogen.

**ANTIGEN**

Recombinant protein corresponding to full length CREM .

**NCBI KEY**

CREM [GeneID: 1390; Nucleotide: NM\_001881.2; Protein: NP\_001872.3]

**CLASS**

Mouse IgG<sub>1</sub>

**SPECIFICITY**

Anti-CREM recognizes recombinant protein CREM.

**APPLICATIONS**

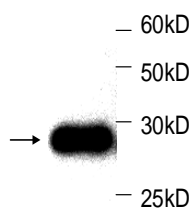
Anti-CREM can be used in **ELISA** and **WB-Re**.

**PRODUCT**

Each vial contains 100 µg IgG in 100 µl of citrate-tris-HCl buffer pH7.0 with 0.02% Proclin 300.

**STORAGE**

The antibody may be stored at -20°C for one year in its original formulation. Additionally, antibody may be stored at 2°C to 8°C for up to 1 month without detectable loss of activity. **Avoid repeated freeze-thaw cycles of the diluted antibody.**

**DATA**

WB (1:1000) analysis of recombinant protein CREM with Anti-CREM (E552001-22-PU).

**For Research Use Only**