



## ALDHI Antibody

-15-PU

E553019

**CATALOG #**

E553019-15-PU

**SOURCE**

Purified mouse monoclonal antibody generated using *E.coli* expressed recombinant protein ALDHI as immunogen.

**ANTIGEN**

Recombinant protein corresponding to fragment (aa/272-517) ALDHI.

**SWISS-PORT KEY**

ALDHI [P05091]

**CLASS**

Mouse IgG<sub>1</sub>

**SPECIFICITY**

Anti-ALDHI recognizes ALDHI expression in HepG2 whole cell lysate.

**APPLICATIONS**

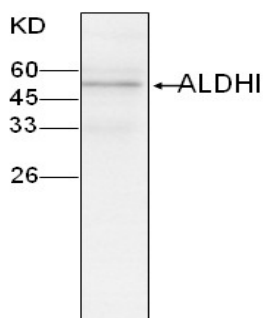
Anti-ALDHI can be used in **Elisa** and **WB-Ce**.

**PRODUCT**

Each vial contains 100 µg IgG in 100 µl of glycine-tris-HCl buffer pH7.0 with 0.02% Proclin 300.

**STORAGE**

The antibody may be stored at -20°C for one year in its original formulation. Additionally, antibody may be stored at 2°C to 8°C for up to 1 month without detectable loss of activity. **Avoid repeated freeze-thaw cycles of the diluted antibody.**

**DATA**

WB (1:1000) analysis of ALDHI expression in HepG2 whole cell lysate with Anti-ALDHI ([E553019-15-PU](#)).

**For Research Use Only**