



Immunodominant antigen Cp23 Antibody

E559539
- 17-PU

CATALOG #

E559539-17-PU

SOURCE

Purified mouse monoclonal antibody generated using *E.coli* expressed recombinant protein Immunodominant antigen Cp23 as immunogen.

ANTIGEN

Recombinant protein corresponding to full length Immunodominant antigen Cp23 .

NCBI KEY

Immunodominant antigen Cp23 [GeneID: 3414042; Nucleotide: XM_661335.1; Protein: XP_666427.1]

CLASS

Mouse IgG_{2b}

SPECIFICITY

Anti-Immunodominant antigen Cp23 recognizes recombinant protein Immunodominant antigen Cp23.

APPLICATIONS

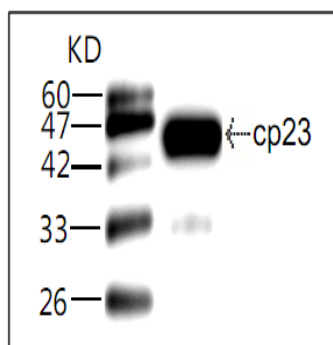
Anti-Immunodominant antigen Cp23 can be used in **ELISA** and **WB-Re**.

PRODUCT

Each vial contains 100 µg IgG in 100 µl of citrate-tris-HCl buffer pH7.0 with 0.02% Proclin 300.

STORAGE

The antibody may be stored at -20°C for one year in its original formulation. Additionally, antibody may be stored at 2°C to 8°C for up to 1 month without detectable loss of activity. **Avoid repeated freeze-thaw cycles of the diluted antibody.**

DATA

WB (1:1000) analysis of recombinant protein Immunodominant antigen Cp23 with Anti-Immunodominant antigen Cp23 (E559539-17-PU).

For Research Use Only