



## CP4-EPSPS Antibody

-1-PU

E559705

**CATALOG #**

E559705-1-PU

**SOURCE**

Purified mouse monoclonal antibody generated using *E.coli* expressed recombinant protein CP4-EPSPS as immunogen.

**ANTIGEN**

Recombinant protein corresponding to full length of CP4-EPSPS.

**PROTEIN\_ID**

Q587N9

**CLASS**

Mouse Ig G1

**SPECIFICITY**

Anti-CP4-EPSPS recognizes recombinant CP4-EPSPS protein and transgenic Soybean.

**APPLICATIONS**

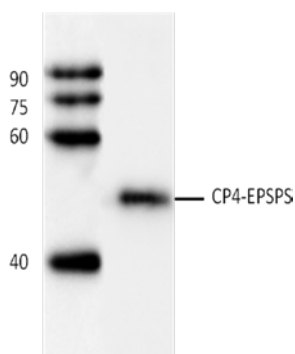
Anti-CP4-EPSPS can be used in **ELISA** and **WB**.

**PRODUCT**

Each vial contains 100 µg IgG in 100 µl of citrate-tris-HCl buffer pH7.0 with 0.02% Proclin 300.

**STORAGE**

The antibody may be stored at -20°C for one year in its original formulation. Additionally, antibody may be stored at 2°C to 8°C for up to 1 month without detectable loss of activity. **Avoid repeated freeze-thaw cycles of the diluted antibody.**

**DATA**

WB (1:1000) analysis of CP4-EPSPS fusion protein with Anti-CP4-EPSPS (E559705-1-PU).

**For Research Use Only**