



CKM Antibody

E561011
-A-SE**CATALOG #**

E561011-A-SE

SOURCE

Purified rabbit polyclonal antibody raised against *E.coli* expressed recombinant protein CKM as immunogen.

ANTIGEN

Recombinant protein corresponding to full length CKM.

SWISS-PROT KEY

CKM [P06732]

SPECIFICITY

Anti-CKM recognizes CKM expression in HEK293 whole cell lysate

APPLICATIONS

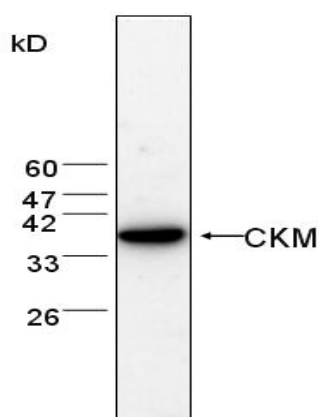
Anti-CKM can be used in **ELISA** and **WB-Ce**.

PRODUCT

Each vial contains 100µl serum.

STORAGE

The antibody may be stored at -20°C for one year in its original formulation. Additionally, antibody may be stored at 2°C to 8°C for up to 1 month without detectable loss of activity. **Avoid repeated freeze-thaw cycles of the diluted antibody.**

DATA

WB (1:500) analysis of CKM protein expression in HEK293 whole cell lysate with Anti-CKM (E561011-A-SE).

For Research Use Only