



KLF4 Antibody

-A-SE

E561032

CATALOG #

E561032-A-SE

SOURCE

Rabbit polyclonal antibody raised against synthetic peptide KLF4 as immunogen.

ANTIGEN

Synthetic peptide of KLF4 protein

SWISS-PORT KEY

KLF4 (O43474)

APPLICATIONS

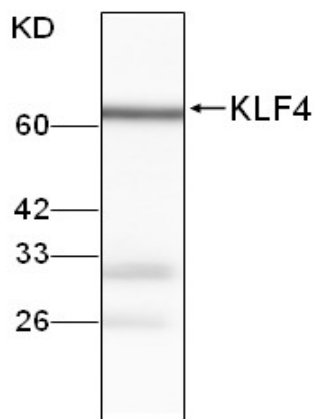
Anti-KLF4 can be used in western blot detection against rice tissues.

PRODUCT

Each vial contains 100µl serum.

STORAGE

The antibody may be stored at -20°C for one year in its original formulation. Additionally, antibody may be stored at 2°C to 8°C for up to 1 month without detectable loss of activity. **Avoid repeated freeze-thaw cycles of the diluted antibody.**

DATA

WB (1:5000) analysis of protein KLF4 expression in E.coli with Anti-KLF4 ([E561032-A-SE](#)).

For Research Use Only