



## SeedG-28 Antibody

-A-SE

E580028

**CATALOG #**

E580028-A-SE

**SOURCE**

Rabbit polyclonal antibody generated using synthetic peptide as immunogen.

**ANTIGEN**

Synthetic peptide of SeedG-28 protein.

**Model\_MSU\_locus**

LOC\_Os10g36180.1

**APPLICATIONS**

Anti-SeedG-28 can be used in western blot detection against rice tissues.

**PRODUCT**

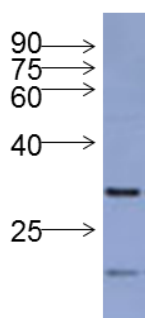
Each vial contains 100µl serum.

**STORAGE**

The antibody may be stored at -20°C for one year in its original formulation. Additionally, antibody may be stored at 2°C to 8°C for up to 1 month without detectable loss of activity. **Avoid repeated freeze-thaw cycles of the diluted antibody.**

**DATA**

KD



WB (1:1000) analysis of protein SeedG-28 expression in rice (CV. 9311) flag leaf at the flowering stage with Anti-SeedG-28 ([E580028-A-SE](#)).

**For Research Use Only**