



## OsChl2 Antibody

-A-SE

E580096

**CATALOG #**

E580096-A-SE

**SOURCE**

Rabbit polyclonal antibody raised against synthetic peptide OsChl2 as immunogen.

**ANTIGEN**

Synthetic peptide of OsChl2 protein

**Model\_MSU\_locus**

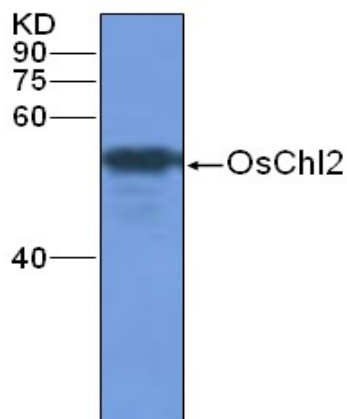
LOC\_Osp1g00120.1

**APPLICATIONS**

Anti-OsChl2 can be used in western blot detection against rice tissues.

**PRODUCT**

Each vial contains 100µl serum.

**STORAGE**The antibody may be stored at -20°C for one year in its original formulation. Additionally, antibody may be stored at 2°C to 8°C for up to 1 month without detectable loss of activity. **Avoid repeated freeze-thaw cycles of the diluted antibody.****DATA**

WB (1:1000) analysis of protein OsChl2 expression in rice (CV. 9311) shoot at the seedling stage with Anti-OsChl2 (E580096-A-SE).

**For Research Use Only**