



OsM3K-R15 Antibody

E580111
-A-SE

CATALOG

E580111-A-SE

SOURCE

Rabbit polyclonal antibody generated using synthetic peptide as immunogen.

ANTIGEN

Synthetic peptide of OsM3K-R15 protein.

Model_MSU_locus

LOC_Os02g39560.1

APPLICATIONS

Anti-OsM3K-R15 can be used in western blot detection against rice tissues.

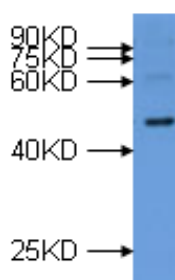
PRODUCT

Each vial contains 100µl serum.

STORAGE

The antibody may be stored at -20°C for one year in its original formulation. Additionally, antibody may be stored at 2°C to 8°C for up to 1 month without detectable loss of activity. **Avoid repeated freeze-thaw cycles of the diluted antibody.**

DATA



WB (1:1000) analysis of protein OsM3K-R15 expression in rice (CV. 9311) flag leaf at the maturing stage with Anti-OsM3K-R15 (E580111--A-SE).

For Research Use Only