



OsMKK8t Antibody

-A-SE

E580130

CATALOG #

E580130-A-SE

SOURCE

Rabbit polyclonal antibody raised against synthetic peptide OsMKK8t as immunogen.

ANTIGEN

Synthetic peptide of OsMKK8t protein

Model_MSU_locus

LOC_Os01g42400.1

APPLICATIONS

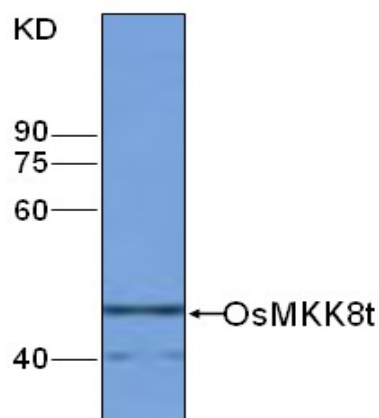
Anti-OsMKK8t can be used in western blot detection against rice tissues.

PRODUCT

Each vial contains 100µl serum.

STORAGE

The antibody may be stored at -20°C for one year in its original formulation. Additionally, antibody may be stored at 2°C to 8°C for up to 1 month without detectable loss of activity. **Avoid repeated freeze-thaw cycles of the diluted antibody.**

DATA

WB (1:500) analysis of protein OsMKK8t expression in rice (CV. 9311) flag leaf at the booting stage with Anti-OsMKK8t (E580130-A-SE).

For Research Use Only