



## OsMYB-25 Antibody

-A-SE

E580203

**CATALOG #**

E580203-A-SE

**SOURCE**

Rabbit polyclonal antibody generated by synthetic peptide as immunogen.

**ANTIGEN**

Synthetic peptide of OsMYB-25 protein.

**Model\_MSU\_locus**

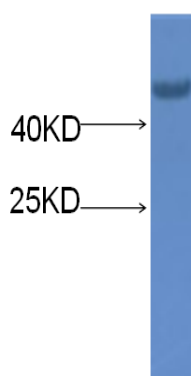
LOC\_Os08g33050.1

**APPLICATIONS**

Anti-OsMYB-25 can be used in western blot detection against rice tissues.

**PRODUCT**

Each vial contains 100µl serum.

**STORAGE**The antibody may be stored at -20°C for one year in its original formulation. Additionally, antibody may be stored at 2°C to 8°C for up to 1 month without detectable loss of activity. **Avoid repeated freeze-thaw cycles of the diluted antibody.****DATA**

WB (1:1000) analysis of protein OsMYB-25 expression in rice (CV. 9311) flag leaf at the flowering stage with Anti-OsMYB-25 ([E580203-A-SE](#)).

**For Research Use Only**