



OsMYB-53 Antibody

-A-SE

E580211

CATALOG #

E580211-A-SE

SOURCE

Rabbit polyclonal antibody generated by synthetic peptide as immunogen.

ANTIGEN

Synthetic peptide of OsMYB-53 protein.

Model_MSU_locus

LOC_Os06g45410.1

APPLICATIONS

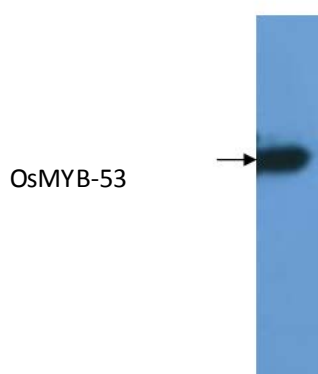
Anti-OsMYB-53 can be used in western blot detection against rice tissues.

PRODUCT

Each vial contains 100µl serum.

STORAGE

The antibody may be stored at -20°C for one year in its original formulation. Additionally, antibody may be stored at 2°C to 8°C for up to 1 month without detectable loss of activity. **Avoid repeated freeze-thaw cycles of the diluted antibody.**

DATA

WB (1:500) analysis of protein OsMYB-53 expression in rice (CV. 9311) flag leaf at the maturing stage with Anti-OsMYB-53 ([E580211-A-SE](#)).

For Research Use Only