



Actin Mouse Monoclonal (6D1) Antibody

E79004

Background: Maltose binding protein (MBP) is a useful affinity tag that can increase the expression level and solubility of the MBP tagged protein. It promotes proper folding of the fusion protein, and it can be also used to prevent an insoluble form (inclusion bodies). MBP Tag antibody is suitable for detecting fusion proteins that contain a MBP-tag.

Catalog Number: E78008

Amount: 100µg/100µl

Clone Number: 6D3

Isotype : IgG1

Immunogen: Full-length MBP protein.

Tested applications: WB. Not yet tested in other applications.

Recommended dilutions: WB: 1:1000.

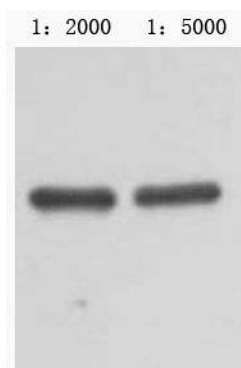
Optimal dilutions/concentrations should be determined by the end user.

Form: Liquid

Concentration: 1mg/ml in PBS, pH 7.4, containing 0.02% sodium azide and 50% glycerol.

Storage: MBP antibody is stable for 1 year at -20°C. For long term storage, Aliquot and store at -20°C or below. Avoid repeated freezing and thawing cycles.

Reactivity: ?



Western blot analysis of MBP-tag fusion protein with MBP-tag mouse mAb(6D3) diluted at 1:2000(left) and 1:5000(right).

For Research Use Only