



Synaptophysin Antibody

E8M0407-30

- Catalog Number:** E8M0407-30
- Amount:** 100ul, 0.31mg/ml
- Description:** Synaptophysin is a 38 kDa glycoprotein present in the membrane of neuronal presynaptic vesicles in brain, spinal cord, retina, vesicles of adrenal medulla, neuromuscular junctions, and endocrine cells. It is also expressed by neuroendocrine cells throughout the body, both normal and neoplastic. Synaptophysin is a useful marker for the identification of normal neuroendocrine cells and neuroendocrine neoplasms.
- Clone No:** A1-7
- Positive control:** Mouse brain
- Cellular Localization:** Cytoplasmic vesicle
- Swiss-Prot No. :** Q62277
- Project ID:** PK008
- Molecular Wt:** 42kDa
- Form of Antibody:** Mouse monoclonal IgG1 in 1*TBS (pH7.4), 0.5%BSA, 25%Glycerol. Preservative: 0.05% Sodium Azide.
- Storage/Stability:** Store at +4°C after thawing. Aliquot store at -20°C or -80°C. Avoid repeated freeze / thaw cycles.
- Specificity/Sensitivity:** This antibody is produced by immunizing mouse with a synthetic peptide (KLH-coupled) corresponding to near TOPO-MOD residues of synaptophysin.
- Reactivity:** Human, Mouse, Rat
- Applications:** WB: 1:1,000
- References:**
1. Genome Res. 14:2121-2127(2004).
 2. Nucleic Acids Res. 15:9607-9607(1987).

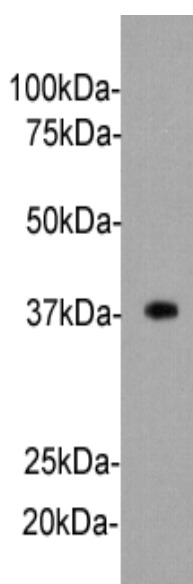


Fig: Western blot analysis on mouse brain lysates using anti-synaptophysin monoclonal antibody.

For Research Use Only