

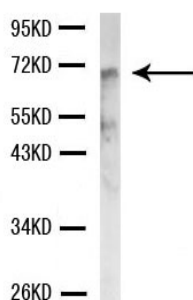


AFP Polyclonal Antibody

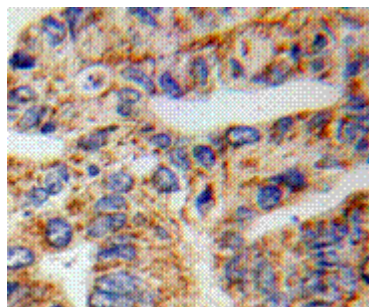
E90002

- Background:** Binds copper, nickel, and fatty acids as well as, and bilirubin less well than, serum albumin. Only a small percentage (less than 2%) of the human AFP shows estrogen-binding properties.
- Catalog Number:** E90002
- Amount:** 100µg/100µl
- Gene ID:** 174
- Species:** Rabbit
- Protein Accession NO:** NP_001125.1
- Immunogen:** A 14 amino acid peptide from 395-408aa of human AFP
- Purification:** Antigen affinity purification
- Storage:** Store at 4°C or -20°C (with 50% glycerol); Minimize freeze-thaw cycles; Non-hazardous; No MSDS required.
- Formulation:** Each vial at least contains 0.1 mg IgG in 0.1 ml (1 mg/ml) of PBS pH7.4 with 0.1% sodium azide.
- Limitation:** For research use only and are not intended for diagnostic or therapeutic use.
- Isotope:** Rabbit IgG
- Species Reactivities:** Human Mouse Rat
- Tested Applications:** ELISA, WB; IHC Other applications have not been tested.
- Application notes:** WB: 1:3000; IHC: 1:50-200

Western blot-AFP antibody



AFP antibody at 1/3000 dilution
HepG2 cell lysate
Predicted band size: 69KD
Observed band size: 69KD



Immunohistochemistry of paraffin-embedded Liver cancer using AFP Antibody

For Research Use Only