

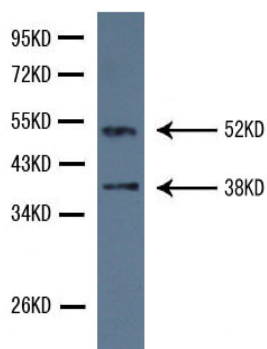


AKT1 Polyclonal Antibody

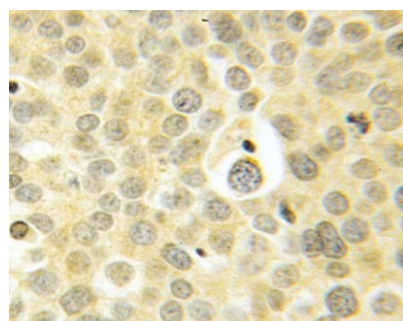
E90003A

- Background:** Plays a role as a key modulator of the AKT-mTOR signaling pathway controlling the tempo of the process of newborn neurons integration during adult neurogenesis, including correct neuron positioning, dendritic development and synapse formation. By similarity. General protein kinase capable of phosphorylating several known proteins.
- Catalog Number:** E90003A
- Amount:** 100µg/100µl
- Gene ID:** 207
- Species:** Rabbit
- Protein Accession NO:** NP_001014431.1
- Immunogen:** Recombinant N terminal 150aa of human AKT1.
- Purification:** Antigen affinity purification
- Storage:** Store at 4°C or -20°C (with 50% glycerol); Minimize freeze-thaw cycles; Non-hazardous.
- Formulation:** Each vial at least contains 0.1 mg IgG in 0.1 ml (1 mg/ml) of PBS pH7.4 with 0.1% sodium azide.
- Limitation:** For research use only and are not intended for diagnostic or therapeutic use.
- Isotope:** Rabbit IgG
- Species Reactivities:** Human Mouse Rat
- Tested Applications:** ELISA, WB; IHC Other applications have not been tested.
- Application notes:** WB: 1:1000; IHC: 1:50-200

Western blot-AKT1 antibody



AKT1 antibody at 1/1000 dilution
Brain cell lysate
Predicted band size: 56KD
Observed band size: 52KD;38KD



Immunohistochemistry of paraffin-embedded Ovary cancer using AKT Antibody

For Research Use Only