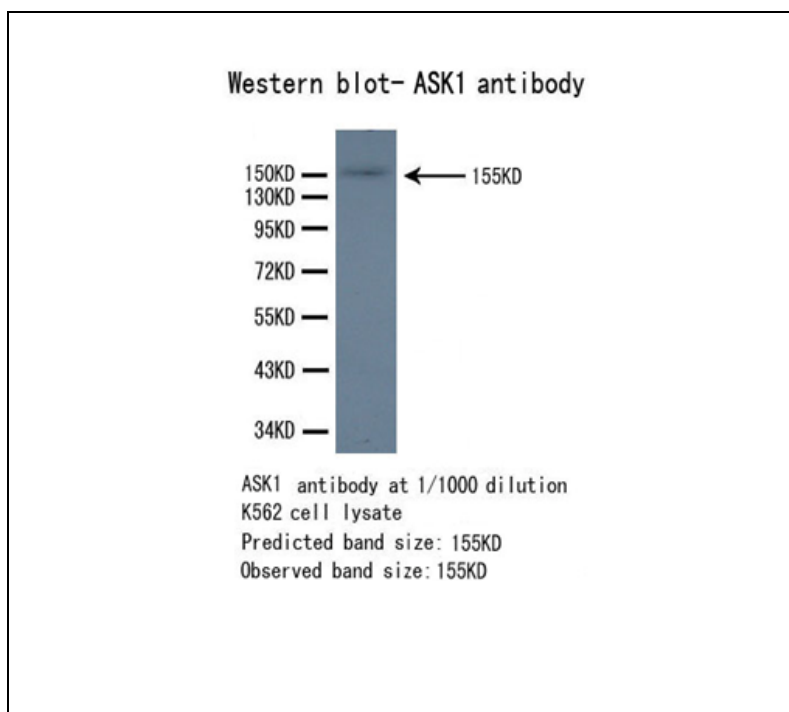




## ASK1 Polyclonal Antibody

E90007

- Background:** Component of a protein kinase signal transduction cascade. Phosphorylates and activates MAP2K4 and MAP2K6, which in turn activate the JNK and p38 MAP kinases, respectively. Overexpression induces apoptotic cell death.
- Catalog Number:** E90007
- Amount:** 100µg/100µl
- Gene ID:** 4217
- Species:** Rabbit
- Protein Accession NO:** NP\_005914.1
- Immunogen:** Recombinant C terminal 200aa of human ASK1.
- Purification:** Antigen affinity purification
- Storage:** Store at 4°C or -20°C (with 50% glycerol); Minimize freeze-thaw cycles; Non-hazardous.
- Formulation:** Each vial at least contains 0.1 mg IgG in 0.1 ml (1 mg/ml) of PBS pH7.4 with 0.1% sodium azide.
- Limitation:** For research use only and are not intended for diagnostic or therapeutic use.
- Isotope:** Rabbit IgG
- Species Reactivities:** Human
- Tested Applications:** ELISA; WB; IHC . Other applications have not been tested.
- Application notes:** WB: 1:1000; Predicted molecular weight: 155kd .



**For Research Use Only**