

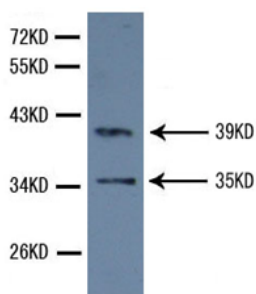


ATF4 Polyclonal Antibody

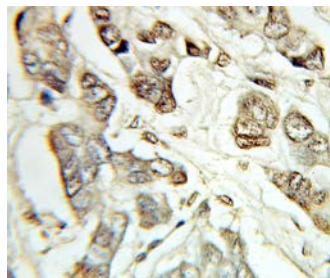
E90008

- Background:** Transcriptional activator. Binds the cAMP response element (CRE) (consensus: 5'-GTGACGT[AC][AG]-3'), a sequence present in many viral and cellular promoters. It binds to a Tax-responsive enhancer element in the long terminal repeat of HTLV-I.
- Catalog Number:** E90008
- Amount:** 100µg/100µl
- Gene ID:** 468
- Species:** Rabbit
- Protein Accession NO:** NP_001666.2
- Immunogen:** Recombinant N terminal 200aa of human ATF4.
- Purification:** Antigen affinity purification
- Storage:** Store at 4°C or -20°C (with 50% glycerol); Minimize freeze-thaw cycles; Non-hazardous.
- Formulation:** Each vial at least contains 0.1 mg IgG in 0.1 ml (1 mg/ml) of PBS pH7.4 with 0.1% sodium azide.
- Limitation:** For research use only and are not intended for diagnostic or therapeutic use.
- Isotope:** Rabbit IgG
- Species Reactivities:** Human, Mouse, Rat
- Tested Applications:** ELISA, WB, IHC . Other applications have not been tested.
- Application notes:** WB: 1:2000, Predicted molecular weight: 155kd .

Western blot-ATF4 antib



ATF4 antibody at 1/1000 dilutio
HeLa cell lysate
Predicted band size: 39KD
Observed band size: 39KD;35KD



Immunohistochemistry of paraffin-embedded
Breast cancer using ATF4 Antibody

For Research Use Only