



BRCA1 Polyclonal Antibody

E90021

Background: This gene encodes a nuclear phosphoprotein that plays a role in maintaining genomic stability, and it also acts as a tumor suppressor. The encoded protein combines with other tumor suppressors, DNA damage sensors, and signal transducers to form a large multi-subunit protein complex known as the BRCA1-associated genome surveillance complex (BASC). This gene product associates with RNA polymerase II, and through the C-terminal domain, also interacts with histone deacetylase complexes. Alternative splicing plays a role in modulating the subcellular localization and physiological function of this gene.

Catalog Number: E90021

Amount: 100µg/100µl

Gene ID: 672

Species: Rabbit

Immunogen: Synthetic peptide corresponding to 16 amino acids near to the C terminus of the human BRCA1 protein.

Purification: Antigen affinity purification

Storage: Store at 4°C or -20°C (with 50% glycerol); Minimize freeze-thaw cycles; Non-hazardous.

Formulation: Each vial at least contains 0.1 mg IgG in 0.1 ml (1 mg/ml) of PBS pH7.4 with 0.1% sodium azide.

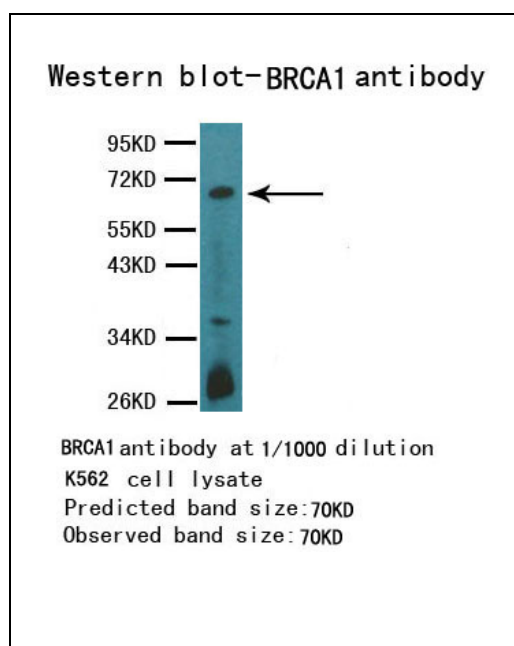
Limitation: For research use only and are not intended for diagnostic or therapeutic use.

Isotope: Rabbit IgG

Species Reactivities: Human, Mouse, Rat

Tested Applications: WB, ELISA . Other applications have not been tested.

Application notes: WB: 1:500; IHC: 1:50-200



For Research Use Only