

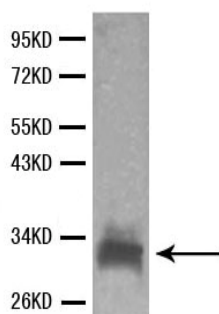


CDC2 Polyclonal Antibody

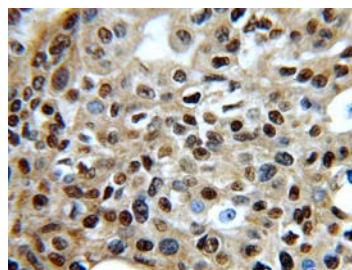
E90038

- Background:** Plays a key role in the control of the eukaryotic cell cycle. It is required in higher cells for entry into S-phase and mitosis. p34 is a component of the kinase complex that phosphorylates the repetitive C-terminus of RNA polymerase II.
- Catalog Number:** E90038
- Amount:** 100µg/100µl
- Gene ID:** 983
- Species:** Rabbit
- Immunogen:** A 14 amino acid peptide from 228-241 aa of human CDC2.
- Purification:** Antigen affinity purification
- Storage:** Store at 4°C or -20°C (with 50% glycerol); Minimize freeze-thaw cycles; Non-hazardous.
- Formulation:** Each vial at least contains 0.1 mg IgG in 0.1 ml (1 mg/ml) of PBS pH7.4 with 0.1% sodium azide.
- Limitation:** For research use only and are not intended for diagnostic or therapeutic use.
- Isotope:** Rabbit IgG
- Species Reactivities:** Human, Mouse, Rat.
- Tested Applications:** WB, IHC, ELISA. Other applications have not been tested.
- Application notes:** WB: 1:500 IHC: 1:50-200.

Western blot- CDC2 antibody



CDC2 antibody at 1/500 dilution
Hela cell lysate
Predicted band size: 32KD
Observed band size: 32KD



Immunohistochemistry of paraffin-embedded
Cervical cancer using CDC2 Antibody.

For Research Use Only