



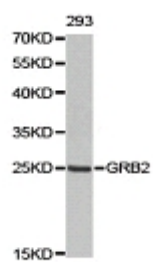
## GRB2 Polyclonal Antibody

E90039

- Catalog Number:** E90039
- Amount:** 100ul
- Background:** The Grb-associated binder (Gab) family is a family of adaptor proteins recruited by a wide variety of receptor tyrosine kinases (RTKs) such as EGFR, HGFR, insulin receptor, cytokine receptor and B cell antigen receptors. Upon stimulation of RTKs by their cognate ligand, Gab is recruited to the plasma membrane where it is phosphorylated and functions as a scaffold (1-4). Multiple tyrosine phosphorylation sites of Gab1 protein have been identified (5). Phosphorylation of Tyr472 regulates its binding to p85 PI3 kinase (6,7). Phosphorylation of Gab1 at Tyr307, Tyr373 and Tyr407 modulates its association to PLCγ(8). Phosphorylation of Tyr627 and Tyr659 is required for Gab1 binding to and activation of the protein tyrosine phosphatase SHP2 (6,9). Akt phosphorylates Gab2 at Ser159. This phosphorylation inhibits Gab2 tyrosine phosphorylation and downstream signal amplification (10).
- Species:** Rabbit
- Isotype:** IgG
- Storage/Stability:** Store at -20oC or -80oC. Avoid freeze / thaw cycles. Buffer: PBS with 0.02% sodium azide, 50% glycerol, pH7.3.
- Synonyms:** ASH; EGFRBP-GRB2; Grb3-3; MST084; MSTP084;
- Immunogen:** Recombinant protein of human GRB2
- Purification:** Affinity purification
- Reactivity:** H M R
- Applications:** WB
- Molecular Weight:** 25kD
- Swiss-Prot No. :** P62993
- Gene ID:** 2885
- References:** 1. Holgado-Madruga, M. et al. (1996) Nature 379, 560-564. 2. Weidner, K.M. et al. (1996) Nature 384, 173-176. 3. Takahashi-Tezuka, M. et al. (1998) Mol. Cell. Biol. 18, 4109-4117. 4. Ingham, R.J. et al. (2001) J Biol Chem 276, 12257-65. 5. Lehr, S. et al. (1999) Biochemistry 38, 151-159. 6. Rocchi, S. et al. (1998) Mol. Endocrinol. 12, 914-923. 7. Yu, C.F. et al. (2001) J Biol Chem 276, 32552-8. 8. Gual, P. et al. (2000) Oncogene 19, 1509-18. 9. Cunnick, J.M. et al. (2001) J Biol Chem 276, 24380-7. 10. Lynch, D.K. and Daly, R.J. (2002) EMBO J 21, 72-82.

**For Research Use Only**

WB 1:500 - 1:1000



Western blot analysis of extracts of 293 cell line, using GRB2 antibody.