

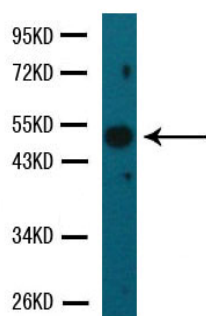


Cox2 Polyclonal Antibody

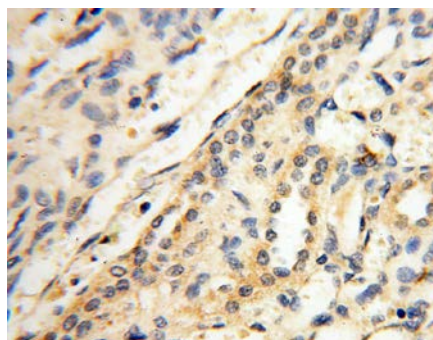
E90046

- Background:** Accelerates programmed cell death by binding to, and antagonizing the apoptosis repressor BCL2 or its adenovirus homolog E1B 19k protein. Induces the release of cytochrome c, activation of CASP3, and thereby apoptosis.
- Catalog Number:** E90046
- Amount:** 100µg/100µl
- Gene ID:** 5743
- Species:** Rabbit
- Protein Accession NO:** NP_000954.1
- Immunogen:** A 19 amino acid peptide from 578-596aa of human Cox2.
- Purification:** Antigen affinity purification
- Storage:** Store at 4°C or -20°C (with 50% glycerol); Minimize freeze-thaw cycles; Non-hazardous.
- Formulation:** Each vial at least contains 0.1 mg IgG in 0.1 ml (1 mg/ml) of PBS pH7.4 with 0.1% sodium azide.
- Limitation:** For research use only and are not intended for diagnostic or therapeutic use.
- Isotope:** Rabbit IgG
- Species Reactivities:** Human, Mouse, Rat.
- Tested Applications:** WB, IHC, ELISA. Other applications have not been tested.
- Application notes:** WB: 1:1000; IHC: 1:50-200.

Western blot- COX2 antibody



COX2 antibody at 1/500 dilution
Brain cell lysate
Predicted band size: 50-55KD
Observed band size: 50-55KD



Immunohistochemistry of paraffin-embedded H-kidney using cox2 Antibody.

For Research Use Only