



C-reactive Protein Polyclonal Antibody

E90048

Background: The protein encoded by this gene belongs to the pentaxin family. It is involved in several host defense related functions based on its ability to recognize foreign pathogens and damaged cells of the host and to initiate their elimination by interacting with humoral and cellular effector systems in the blood. Consequently, the level of this protein in plasma increases greatly during acute phase response to tissue injury, infection, or other inflammatory stimuli.

Catalog Number: E90048

Amount: 100µg/100µl

Gene ID: 1401

Species: Rabbit

Immunogen: Recombinant human c-reactive protein.

Purification: Antigen affinity purification

Storage: Store at 4°C or -20°C (with 50% glycerol); Minimize freeze-thaw cycles; Non-hazardous.

Formulation: Each vial at least contains 0.1 mg IgG in 0.1 ml (1 mg/ml) of PBS pH7.4 with 0.1% sodium azide.

Limitation: For research use only and are not intended for diagnostic or therapeutic use.

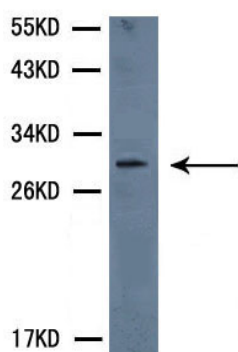
Isotope: Rabbit IgG

Species Reactivities: Human, Mouse, Rat.

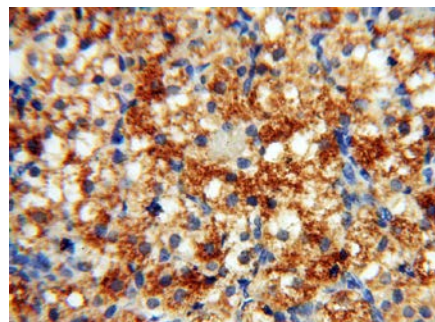
Tested Applications: WB, IHC, ELISA. Other applications have not been tested.

Application notes: WB: 1:500-1000, IHC: 1:50-200.

Western blot- CRP antibody



CRP antibody at 1/1000 dilution
Brain cell lysate
Predicted band size: 30KD
Observed band size: 30KD



Immunohistochemistry of paraffin-embedded H-ovary using CRP Antibody.

For Research Use Only