



ERK2 Polyclonal Antibody

E90057

Background: Involved in both the initiation and regulation of meiosis, mitosis, and postmitotic functions in differentiated cells by phosphorylating a number of transcription factors such as ELK1. Phosphorylates EIF4EBP1; required for initiation of translation. Phosphorylates microtubule-associated protein 2 (MAP2).

Catalog Number: E90057

Amount: 100µg/100µl

Gene ID: 5594

Species: Rabbit

Protein Accession NO: NP_002736

Immunogen: A 22 amino acid peptide from 306-327aa of human ERK2.

Purification: Antigen affinity purification

Storage: Store at 4°C or -20°C (with 50% glycerol); Minimize freeze-thaw cycles; Non-hazardous.

Formulation: Each vial at least contains 0.1 mg IgG in 0.1 ml (1 mg/ml) of PBS pH7.4 with 0.1% sodium azide.

Limitation: For research use only and are not intended for diagnostic or therapeutic use.

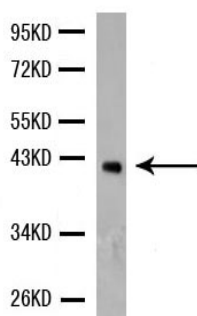
Isotope: Rabbit IgG

Species Reactivities: Human, Mouse, Rat.

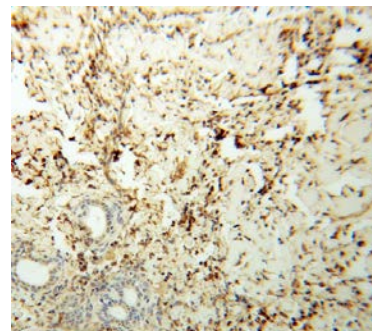
Tested Applications: WB, IHC, ELISA. Other applications have not been tested.

Application notes: WB: 1:1000, IHC: 1:100-200.

Western blot- ERK2 antibody



ERK2 antibody at 1/800 dilution
293 cell lysate
Predicted band size: 41KD
Observed band size: 41KD



Immunohistochemistry of paraffin-embedded
Cervical cancer using ERK2 Antibody.

For Research Use Only