



## CYP1A2 Polyclonal Antibody

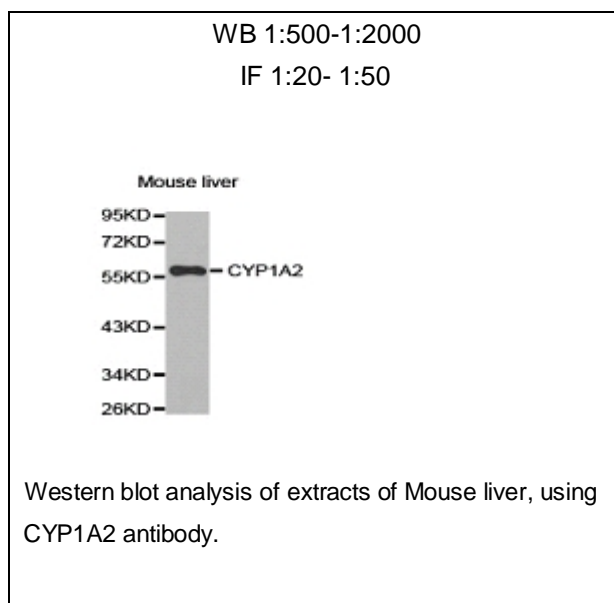
E90062

**Catalog Number:** E90062**Amount:** 100ul

**Background:** This gene encodes a member of the cytochrome P450 superfamily of enzymes. The cytochrome P450 proteins are monooxygenases which catalyze many reactions involved in drug metabolism and synthesis of cholesterol, steroids and other lipids. The protein encoded by this gene localizes to the endoplasmic reticulum and its expression is induced by some polycyclic aromatic hydrocarbons (PAHs), some of which are found in cigarette smoke. The enzyme's endogenous substrate is unknown; however, it is able to metabolize some PAHs to carcinogenic intermediates. Other xenobiotic substrates for this enzyme include caffeine, aflatoxin B1, and acetaminophen. The transcript from this gene contains four Alu sequences flanked by direct repeats in the 3' untranslated region.

**Species:** Rabbit**Isotype:** IgG

**Storage/Stability:** Store at -20oC or -80oC. Avoid freeze / thaw cycles. Buffer: PBS with 0.02% sodium azide, 50% glycerol, pH7.3.

**Synonyms:** CP12; P3-450; P450(PA);**Immunogen:** A synthetic peptide of human CYP1A2**Purification:** Affinity purification**Reactivity:** H M R**Applications:** WB IF**Molecular Weight:** 58kDa**Swiss-Prot No. :** P05177**Gene ID:** 1544**For Research Use Only**