



MLH1 Polyclonal Antibody

E90090

Background: Heterodimerizes with PMS2 to form MutL alpha, a component of the post-replicative DNA mismatch repair system (MMR). DNA repair is initiated by MutS alpha (MSH2-MSH6) or MutS beta (MSH2-MSH6) binding to a dsDNA mismatch, then MutL alpha is recruited to the heteroduplex. Assembly of the MutL-MutS-heteroduplex ternary complex in presence of RFC and PCNA is sufficient to activate endonuclease activity of PMS2.

Catalog Number: E90090

Amount: 100µg/100µl

Gene ID: 4292

Species: Rabbit

Immunogen: Recombinant 400-600aa of human MLH1.

Purification: Antigen affinity purification.

Storage: Store at 4°C or -20°C (with 50% glycerol); Minimize freeze-thaw cycles; Non-hazardous.

Formulation: Each vial at least contains 0.1 mg IgG in 0.1 ml (1 mg/ml) of PBS pH7.4 with 0.1% sodium azide.

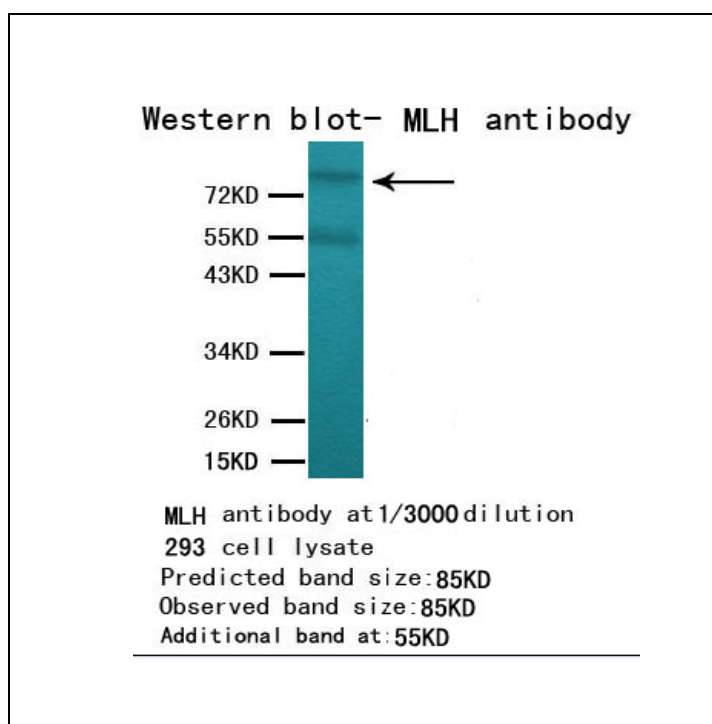
Limitation: For research use only and are not intended for diagnostic or therapeutic use.

Isotope: Rabbit IgG

Species Reactivities: Human

Tested Applications: WB, ELISA. Other applications have not been tested.

Application notes: WB: 1:3000



For Research Use Only