



E90185

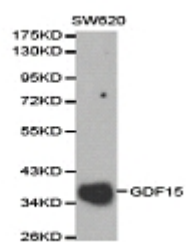
GDF15 Polyclonal Antibody

- Catalog Number:** E90185
- Amount:** 100ul
- Background:** Macrophage inhibitory cytokine-1 (Mic-1), also termed GDF15 (1), PTGF- β (2), PLAB (3), PDF (4), and NAG-1 (5), is a divergent member of the transforming growth factor- β (TGF- β) superfamily (6). Like other family members, Mic-1 is synthesized as an inactive precursor that undergoes proteolytic processing involving removal of an N-terminal hydrophobic signal sequence followed by cleavage at a conserved RXXR site generating an active C-terminal domain that is secreted as a dimeric protein. Mic-1 is highly expressed in the placenta and is also dramatically increased by cellular stress, acute injury, inflammation, and cancer. In the brain, Mic-1 is found in the choroid plexus and is secreted into the cerebrospinal fluid (7). It is also a transcriptional target of the p53 tumor suppressor protein and may serve as a biomarker for p53 activity (8,9). During tumor progression, Mic-1 has various effects on apoptosis, differentiation, angiogenesis, and metastasis, and may also contribute to weight loss during cancer (10,11).
- Species:** Rabbit
- Isotype:** IgG
- Storage/Stability:** Store at -20oC or -80oC. Avoid freeze / thaw cycles. Buffer: PBS with 0.02% sodium azide, 50% glycerol, pH7.3.
- Synonyms:** GDF15;GDF-15;MIC-1;MIC1;NAG-1;PDF;PLAB;PTGFB;Growth/differentiation factor 15;Placental TGF-beta;Placental bone morphogenetic protein;Prostate differentiation factor;
- Immunogen:** Recombinant protein of human GDF15
- Purification:** Affinity purification
- Reactivity:** H M R
- Applications:** WBIHC
- Molecular Weight:** 34.15kDa
- Swiss-Prot No. :** Q99988
- Gene ID:** 9518
- References:** 1. Strelau, J. et al. (2000) J Neurosci 20, 8597-603. 2. Yokoyama-Kobayashi, M. et al. (1997) J Biochem 122, 622-6. 3. Hromas, R. et al. (1997) Biochim Biophys Acta 1354, 40-4. 4. Paralkar, V.M. et al. (1998) J Biol Chem 273, 13760-7. 5. Baek, S.J. et al. (2001) J Biol Chem 276, 33384-92. 6. Bootcov, M.R. et al. (1997) Proc Natl Acad Sci USA 94, 11514-9. 7. Strelau, J. et al. (2000) J Neural Transm Suppl, 273-6. 8. Kannan, K. et al. (2000) FEBS Lett 470, 77-82. 9. Yang, H. et al. (2003) Mol Cancer Ther 2, 1023-9. 10. Johnen, H. et al. (2007) Nat Med 13, 1333-40. 11. Bauskin, A.R. et al. (2006) Cancer Res 66, 4983-6.

For Research Use Only

WB 1:500 - 1:2000

IHC 1:50 - 1:200



Western blot analysis of SW620 cell lysate using
GDF15 antibody.