



## BCL10 Polyclonal Antibody

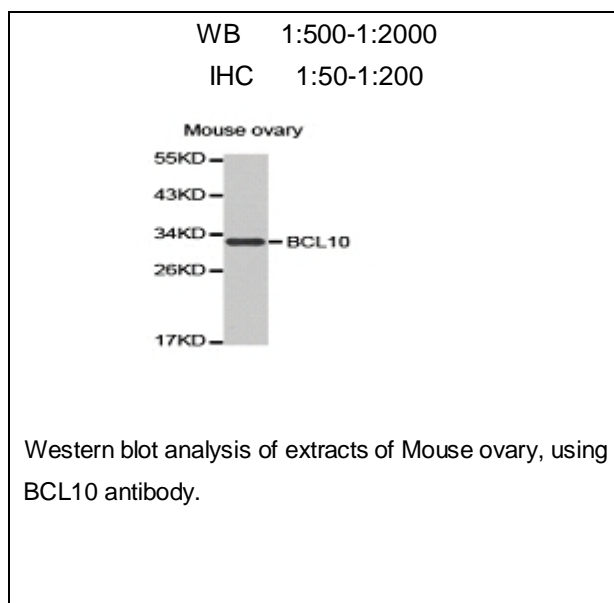
E90191

**Catalog Number:** E90191**Amount:** 100ul

**Background:** This gene was identified by its translocation in a case of mucosa-associated lymphoid tissue (MALT) lymphoma. The protein encoded by this gene contains a caspase recruitment domain (CARD), and has been shown to induce apoptosis and to activate NF-kappaB. This protein is reported to interact with other CARD domain containing proteins including CARD9, 10, 11 and 14, which are thought to function as upstream regulators in NF-kappaB signaling. This protein is found to form a complex with MALT1, a protein encoded by another gene known to be translocated in MALT lymphoma. MALT1 and this protein are thought to synergize in the activation of NF-kappaB, and the deregulation of either of them may contribute to the same pathogenetic process that leads to the malignancy.

**Species:** Rabbit**Isotype:** IgG

**Storage/Stability:** Store at -20oC or -80oC. Avoid freeze / thaw cycles. Buffer: PBS with 0.02% sodium azide, 50% glycerol, pH7.3.

**Synonyms:** CLAP; mE10; CIPER; c-E10; CARMEN;**Immunogen:** Recombinant protein of human BCL10**Purification:** Affinity purification**Reactivity:** H M**Applications:** WB IHC**Molecular Weight:** 26kDa**Swiss-Prot No. :** O95999**Gene ID:** 8915

**For Research Use Only**