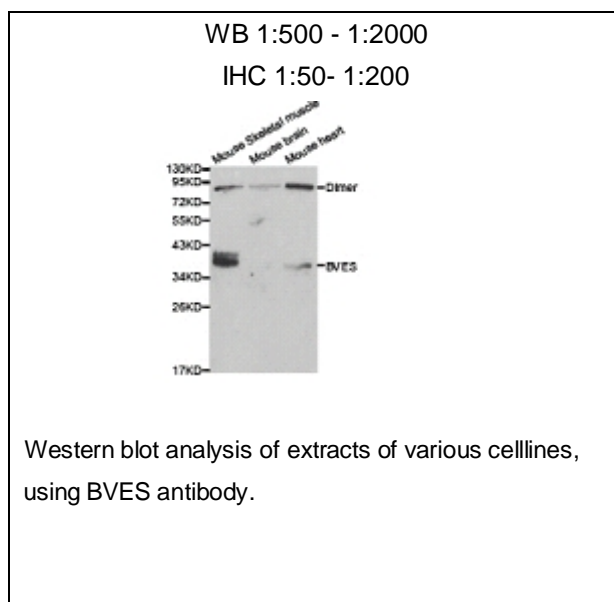




BVES Polyclonal Antibody

E90213

- Catalog Number:** E90213
Amount: 100ul
Background: This gene encodes a member of the POP family of proteins containing three putative transmembrane domains. This gene is expressed in cardiac and skeletal muscle and may play an important role in development of these tissues. The mouse ortholog may be involved in the regeneration of adult skeletal muscle and may act as a cell adhesion molecule in coronary vasculogenesis. Three transcript variants encoding the same protein have been found for this gene. [provided by RefSeq, Dec 2010]
Species: Rabbit
Isotype: IgG
Storage/Stability: Store at -20oC or -80oC. Avoid freeze / thaw cycles. Buffer: PBS with 0.02% sodium azide, 50% glycerol, pH7.3.
Synonyms: BVES ; Popeye protein 1; POPDC1; POP1; HBVES
Immunogen: Recombinant Protein of human BVES
Purification: Affinity purification
Reactivity: H M R
Applications: WB IHC
Molecular Weight: 41kDa
Swiss-Prot No. : Q8NE79
Gene ID: 11149



For Research Use Only