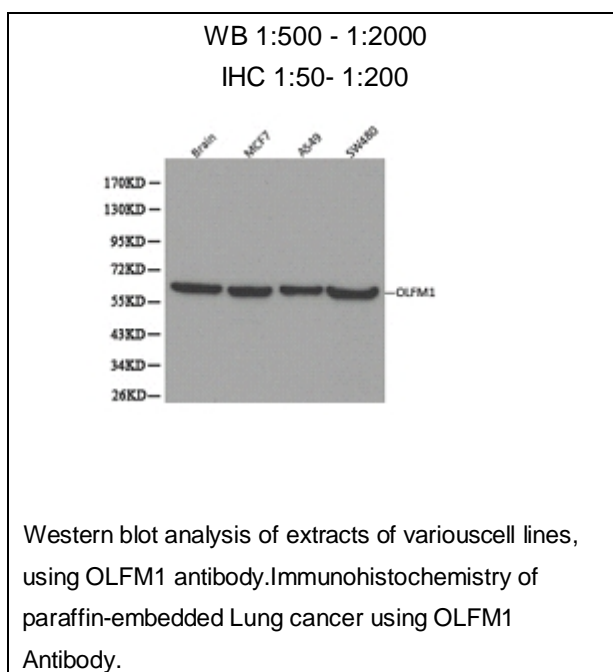




OLFM1 Polyclonal Antibody

E90261

- Catalog Number:** E90261
Amount: 100ul
Background: The Olfactomedin family comprises a diverse group of secreted glycoproteins, which includes OLFM1 (Noelin-1), OLFM2 (Noelin-2), OLFM3 (Noelin-3), OLFM4 (Noelin-4), tiarín, pancortin, gliomedin and myocilin. These proteins are implicated in the development of the nervous system. Specifically, OLFM1 and OLFM2 expression is observed in the neural plate and neural crest, as well as in the cranial ganglia in mouse at E8-10, and later in brain tissue and in the zone of polarizing activity in the limb. Overexpression of OLFM1 causes an excess of neural crest emigrations and prolonged neural crest production. OLFM2 participates in the regulation of the development of the anterior nervous system. An Arg144Gln mutation in OLFM2 has been implicated as a possible cause for open-angle glaucoma (OAG).
Species: Rabbit
Isotype: IgG
Storage/Stability: Store at -20oC or -80oC. Avoid freeze / thaw cycles. Buffer: PBS with 0.02% sodium azide, 50% glycerol, pH7.3.
Synonyms: OLFM1 ; NOELIN1; AMY; olfactomedin 1; NOE1; Noelin
Immunogen: Recombinant Protein of human OLFM1
Purification: Affinity purification
Reactivity: H M R
Applications: WB IHC
Molecular Weight: 55kDa
Swiss-Prot No. : Q99784
Gene ID: 10439



For Research Use Only

For Research Use Only