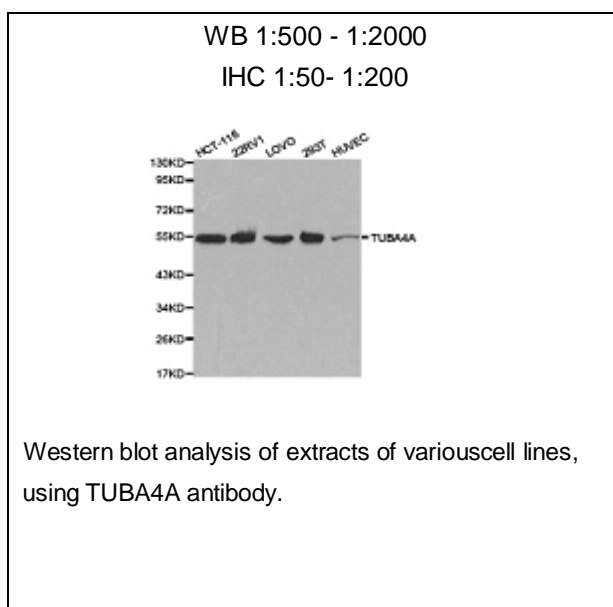




TUBA4A Polyclonal Antibody

E90278

- Catalog Number:** E90278
Amount: 100ul
Background: Microtubules of the eukaryotic cytoskeleton perform essential and diverse functions and are composed of a heterodimer of alpha and beta tubulin. The genes encoding these microtubule constituents are part of the tubulin superfamily, which is composed of six distinct families. Genes from the alpha, beta and gamma tubulin families are found in all eukaryotes. The alpha and beta tubulins represent the major components of microtubules, while gamma tubulin plays a critical role in the nucleation of microtubule assembly. There are multiple alpha and beta tubulin genes and they are highly conserved among and between species. This gene encodes an alpha tubulin that is a highly conserved homolog of a rat testis-specific alpha tubulin. [provided by RefSeq]
Species: Rabbit
Isotype: IgG
Storage/Stability: Store at -20oC or -80oC. Avoid freeze / thaw cycles. Buffer: PBS with 0.02% sodium azide, 50% glycerol, pH7.3.
Synonyms: TUBA4A ; Tubulin alpha 4A chain; tubulin, alpha 4a; TUBA1; Tubulin alpha 1 chain; FLJ30169; α -Tubulin;
Immunogen: Recombinant protein of human TUBA4A
Purification: Affinity purification
Reactivity: H M R
Applications: WB IHC
Molecular Weight: 55kDa
Swiss-Prot No. : P68366
Gene ID: 7277



For Research Use Only