



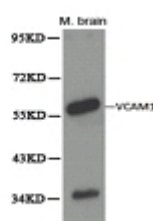
VCAM1 Polyclonal Antibody

E90279

- Catalog Number:** E90279
Amount: 100ul
Background: Vascular cell adhesion protein 1 (VCAM1) is important in cell-cell recognition. It has been reported to function in leukocyte-endothelial cell adhesion, interact with the beta-1 integrin VLA4 on leukocytes, and mediate both adhesion and signal transduction. There are two isoforms; Isoform 1, a single-pass type I membrane protein, and isoform 2, a lipid-anchor (GPI-anchor). VCAM1 is expressed on inflamed vascular endothelium, as well as on macrophage-like and dendritic cell types in both normal and inflamed tissue. It is also expressed in the bone marrow (1).
Species: Rabbit
Isotype: IgG
Storage/Stability: Store at -20oC or -80oC. Avoid freeze / thaw cycles. Buffer: PBS with 0.02% sodium azide, 50% glycerol, pH7.3.
Synonyms: VCAM1 ; L1CAM; VCAM 1; V CAM 1; DKFZp779G2333; CD106
Immunogen: Recombinant Protein of human VCAM1
Purification: Affinity purification
Reactivity: H M R
Applications: WB IHC
Molecular Weight: 81kDa
Swiss-Prot No. : P19320
Gene ID: 7412

WB 1:500 - 1:2000

IHC 1:50- 1:200



Western blot analysis of extracts of mouse brain tissue, using VCAM1 antibody. Immunohistochemistry of paraffin-embedded H-spleen using VCAM1 Antibody.

For Research Use Only