

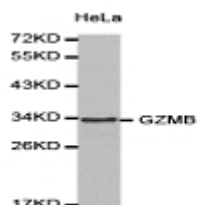


GZMB Polyclonal Antibody

E90375

- Catalog Number:** E90375
- Amount:** 100ul
- Background:** GZMB(Granzyme B) is also named as CGL1, CSPB, CTLA1, GRB and belongs to the Granzyme subfamily. This enzyme is necessary for target cell lysis in cell-mediated immune responses. The cytotoxic lymphocyte protease granzyme B (GzmB) can promote apoptosis through direct processing and activation of members of the caspase family. GzmB can also cleave the BH3-only protein, BID, to promote caspase-independent mitochondrial permeabilization(PMID:17283187).GzmB induces laminB degradation in isolated nuclei less efficiently than GzmA(PMID:11331782).This full length protein has 2 glycosylation sites and a signal peptide.Unglycosylated human granzyme B is 26 kDa and g high mannose glycosylated is 32 kDa and only 32kDa or smaller forms of granzyme B are accumulated within nuclei(PMID:8626751). This antibody is specific to GZMB
- Species:** Rabbit
- Isotype:** IgG
- Storage/Stability:** Store at -20oC or -80oC. Avoid freeze / thaw cycles. Buffer: PBS with 0.02% sodium azide, 50% glycerol, pH7.3.
- Synonyms:** HLP; CCPI; CGL1; CSPB; SECT; CGL-1; CSP-B; CTLA1; CTSG1;
- Immunogen:** Recombinant protein of human GZMB
- Purification:** Affinity purification
- Reactivity:** H
- Applications:** WB IHC IF
- Molecular Weight:** 28kDa
- Swiss-Prot No. :** P10144
- Gene ID:** 3002

WB 1:500-1:2000
IHC 1:50-1:200
IF 1:50-1:100



Western blot analysis of extracts of HeLa cellline, using GZMB antibody.

For Research Use Only