



## KRT18 Polyclonal Antibody

E90388

**Catalog Number:** E90388**Amount:** 100ul

**Background:** Keratins are a large family of proteins that form the intermediate filament cytoskeleton of epithelial cells. Keratin expression is highly regulated, tissue specific, and varies according to cell-state. Type I keratins consist of acidic, low molecular weight proteins with MW ranging from 40 kDa (KRT19) to 64 kDa (KRT9). Type 2 keratins consist of basic or neutral, high molecular weight proteins with MW from 52 kDa (KRT8) to 67 kDa (KRT18). KRT18, also named as CYK18, PIG46 and K18, is the most commonly found members of the intermediate filament gene family. KRT18 is a type I keratin which is found primarily in non squamous epithelia and is present in a majority of adenocarcinomas and ductal carcinomas but not in squamous cell carcinomas.

**Species:** Rabbit**Isotype:** IgG

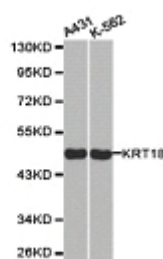
**Storage/Stability:** Store at -20oC or -80oC. Avoid freeze / thaw cycles. Buffer: PBS with 0.02% sodium azide, 50% glycerol, pH7.3.

**Synonyms:** PIG46;CYK18;K18;CK-18;**Immunogen:** Recombinant protein of human KRT18**Purification:** Affinity purification**Reactivity:** H**Applications:** WB IHC IP**Molecular Weight:** 48kDa**Swiss-Prot No. :** P05783**Gene ID:** 3875

WB 1:500 - 1:2000

IHC 1:50- 1:100

IP 1:20- 1:50



Western blot analysis of extracts of various celllines,  
using KRT18 antibody.

**For Research Use Only**