



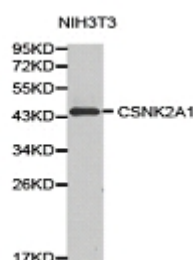
## CSNK2A1 Polyclonal Antibody

**E90435**

- Catalog Number:** E90435  
**Amount:** 100ul  
**Background:** Casein kinase II is a serine/threonine protein kinase that phosphorylates acidic proteins such as casein. The kinase exists as a tetramer and is composed of an alpha, an alpha-prime, and two beta subunits. The alpha subunits contain the catalytic activity while the beta subunits undergo autophosphorylation. The protein encoded by this gene represents the alpha subunit. While this gene is found on chromosome 20, a related transcribed pseudogene is found on chromosome 11. Three transcript variants encoding two different proteins have been found for this gene.  
**Species:** Rabbit  
**Isotype:** IgG  
**Storage/Stability:** Store at -20oC or -80oC. Avoid freeze / thaw cycles. Buffer: PBS with 0.02% sodium azide, 50% glycerol, pH7.3.  
**Synonyms:** CKII; CK2A1; CSNK2A3;  
**Immunogen:** Recombinant protein of human CSNK2A1  
**Purification:** Affinity purification  
**Reactivity:** H M R  
**Applications:** WB IHC  
**Molecular Weight:** 45kDa  
**Swiss-Prot No. :** P68400  
**Gene ID:** 1457

WB 1:500 - 1:1000

IHC 1:50- 1:100



Western blot analysis of extracts of various celllines,  
using CSNK2A1 antibody.

**For Research Use Only**