



## MAP2 Polyclonal Antibody

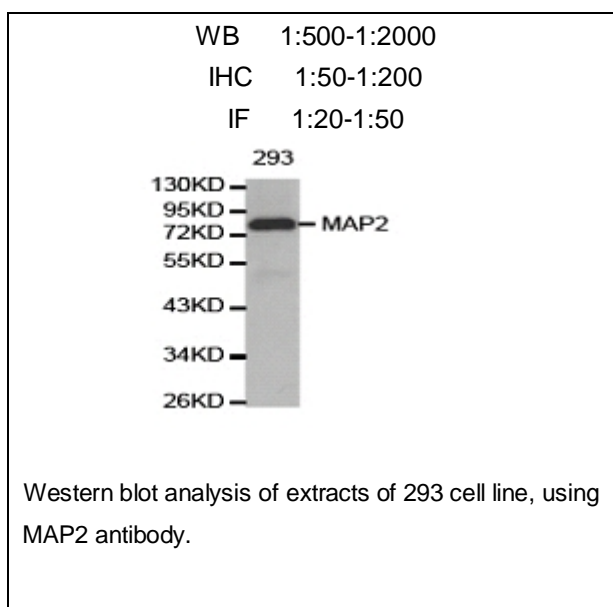
E90453

**Catalog Number:** E90453**Amount:** 100ul

**Background:** MAP2 (microtubule-associated protein 2) is a cytoskeleton protein abundant in brain and has important role in neuronal morphogenesis. Multiple high molecular weight (MW) and low molecular weight (MW) MAP2 isoforms are expressed within axons, dendrites, and cell bodies. The expression of MAP2 is regulated in both a tissue- and developmentally specific manner. The 280 kD MAP2B is present throughout rat brain development, and the slightly larger MAP2A appears first during the end of the second week of postnatal life. MAP2C, composed of several bands of about 70 kD, is present during early brain development, and largely disappears from the mature brain except for the retina, olfactory bulb, and cerebellum. MAP2 antibodies have been widely used to mark the neuron or dendrite formation. This antibody can recognize both high MW and low MW isoforms of MAP2.

**Species:** Rabbit**Isotype:** IgG

**Storage/Stability:** Store at -20°C or -80°C. Avoid freeze / thaw cycles. Buffer: PBS with 0.02% sodium azide, 50% glycerol, pH7.3.

**Synonyms:** MAP2A; MAP2B; MAP2C;**Immunogen:** Recombinant protein of human MAP2**Purification:** Affinity purification**Reactivity:** H M R**Applications:** WB IHC IF**Molecular Weight:** 59kDa**Swiss-Prot No. :** P11137**Gene ID:** 4133**For Research Use Only**