



NOTCH1 Polyclonal Antibody

E90473

Catalog Number: E90473

Amount: 100ul

Background: This gene encodes a member of the Notch family. Members of this Type 1 transmembrane protein family share structural characteristics including an extracellular domain consisting of multiple epidermal growth factor-like (EGF) repeats, and an intracellular domain consisting of multiple, different domain types. Notch family members play a role in a variety of developmental processes by controlling cell fate decisions. The Notch signaling network is an evolutionarily conserved intercellular signaling pathway which regulates interactions between physically adjacent cells. In *Drosophila*, notch interaction with its cell-bound ligands (delta, serrate) establishes an intercellular signaling pathway that plays a key role in development. Homologues of the notch-ligands have also been identified in human, but precise interactions between these ligands and the human notch homologues remain to be determined. This protein is cleaved in the trans-Golgi network, and presented on the cell surface as a heterodimer. This protein functions as a receptor for membrane bound ligands, and may play multiple roles during development. [provided by RefSeq, Jul 2008]

Species: Rabbit

Isotype: IgG

Storage/Stability: Store at -20oC or -80oC. Avoid freeze / thaw cycles. Buffer: PBS with 0.02% sodium azide, 50% glycerol, pH7.3.

Synonyms: hN1; TAN1;

Immunogen: A synthetic peptide of human NOTCH1

Purification: Affinity purification

Reactivity: H M R

Applications: WB IHC

Molecular Weight: 273kDa

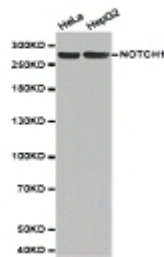
Swiss-Prot No. : P46531

Gene ID: 4851

For Research Use Only

WB 1:500 - 1:1000

IHC 1:50- 1:100



Western blot analysis of extracts of various celllines,
using NOTCH1 antibody.