



## NES Polyclonal Antibody

E90484

**Catalog Number:** E90484**Amount:** 100ul

**Background:** Nestin is an intermediate filament family member protein that is structurally related to the neurofilament proteins (1). It is highly expressed in the developing brain, where it may help to regulate cell structure and intracellular processes required for neural cell division and migration (1,2). Upon maturation of the brain, nestin expression is quickly down-regulated and replaced by expression of the neurofilament proteins (2). Because nestin is expressed in both mature and precursor neuronal and glial cells, as well as in the developing brain and in the brain and spinal cord following damage, nestin is widely accepted as a marker of neural stem/progenitor cells (3). Expression of nestin is also found in cells from various nervous system tumors, including gliomas, neuroblastomas, astrocytomas, and is generally accepted as a marker for neural cancer stem cells (3). Nestin expression has also been observed in astrocytes, retina, cardiac muscle, pancreas and other tissues (3). Therefore, the acceptance of nestin as an exclusive marker of neural stem/progenitor cells is not unanimous.

**Species:** Rabbit**Isotype:** IgG

**Storage/Stability:** Store at -20°C or -80°C. Avoid freeze / thaw cycles. Buffer: PBS with 0.02% sodium azide, 50% glycerol, pH7.3.

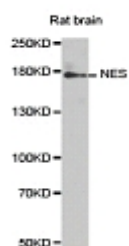
**Synonyms:** NES; FLJ21841; Nbla00170 ;Nestin;**Immunogen:** A synthetic peptide of human NES**Purification:** Affinity purification**Reactivity:** H M R**Applications:** WB IF**Molecular Weight:** 177kDa**Swiss-Prot No. :** P48681**Gene ID:** 10763

**References:** 1. Michalczyk, K. and Ziman, M. (2005) *Histol Histopathol* 20, 665-71. 2. Giliarov, A.V. (2007) *Morfologiya* 131, 85-90. 3. Gilyarov, A.V. (2008) *Neurosci Behav Physiol* 38, 165-9.

**For Research Use Only**

WB 1:500 - 1:1000

IF 1:20- 1:50



Western blot analysis of extracts of rat braincell lines,  
using NES antibody.