



NPM1 Polyclonal Antibody

E90485**Catalog Number:** E90485**Amount:** 100ul

Background: Nucleophosmin (NPM1,B23) is a putative ribosome assembly factor with a high affinity for peptides containing nuclear localization signals (NLSs). The transport of proteins across the nuclear envelope is a selective, multistep process involving several cytoplasmic factors. Proteins must be recognized as import substrates, dock at the nuclear pore complex and translocate across the nuclear envelope in an ATP-dependent fashion. Several cytosolic and nuclear proteins that are central to this process have been identified. The 38 kDa nuclear protein nucleophosmin is involved in ribosomal assembly and rRNA transport. It is an abundant protein that is highly phosphorylated by Cdc2 kinase during mitosis.

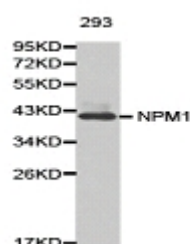
Species: Rabbit**Isotype:** IgG

Storage/Stability: Store at -20oC or -80oC. Avoid freeze / thaw cycles. Buffer: PBS with 0.02% sodium azide, 50% glycerol, pH7.3.

Synonyms: B23; NPM;**Immunogen:** Recombinant protein of human NPM1**Purification:** Affinity purification**Reactivity:** H M R**Applications:** WB IHC**Molecular Weight:** 33kDa**Swiss-Prot No. :** P06748**Gene ID:** 4869

WB 1:500-1:2000

IHC 1:50-1:200



Western blot analysis of extracts of 293 cellline, using NPM1 antibody.

For Research Use Only