



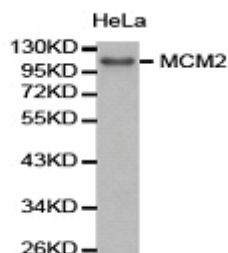
MCM2 Polyclonal Antibody

E90502

- Catalog Number:** E90502
Amount: 100ul
Background: The MCM2-7 complex forms the core of the replicative helicase which acts as the molecular motor that uses ATP binding and hydrolysis to fuel the unwinding of double-stranded DNA at the replication fork in eukaryotes. This complex is the putative replicative helicase essential for 'once per cell cycle' DNA replication initiation and elongation in eukaryotic cells. MCM2, also named CDCL1 and BM28, is a human nuclear protein that plays an important role in 2 crucial steps of the cell cycle, namely, onset of DNA replication and cell division.
Species: Rabbit
Isotype: IgG
Storage/Stability: Store at -20oC or -80oC. Avoid freeze / thaw cycles. Buffer: PBS with 0.02% sodium azide, 50% glycerol, pH7.3.
Synonyms: BM28; CCNL1; CDCL1; cdc19; D3S3194; MITOTIN;
Immunogen: Recombinant protein of human MCM2
Purification: Affinity purification
Reactivity: H M R
Applications: WB IHC
Molecular Weight: 102kDa
Swiss-Prot No. : P49736
Gene ID: 4171

WB 1:500-1:2000

IHC 1:50-1:200



Western blot analysis of extracts of HeLa cell line, using MCM2 antibody.

For Research Use Only