



MAP2K3 Polyclonal Antibody

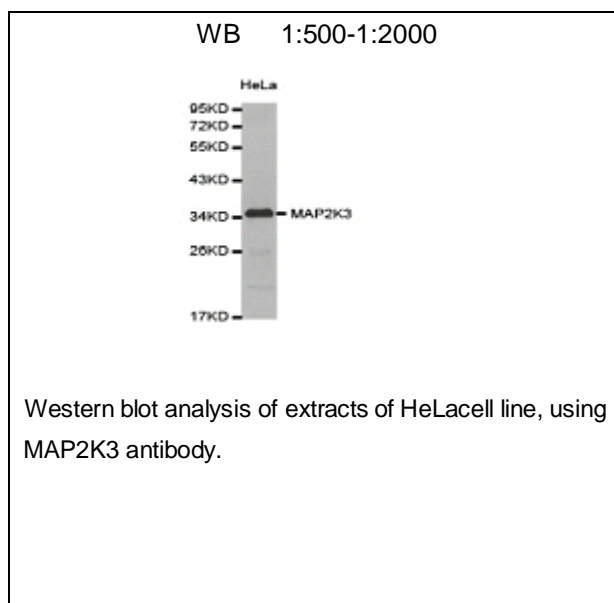
E90513

Catalog Number: E90513**Amount:** 100ul

Background: The protein encoded by this gene is a dual specificity protein kinase that belongs to the MAP kinase kinase family. This kinase is activated by mitogenic and environmental stress, and participates in the MAP kinase-mediated signaling cascade. It phosphorylates and thus activates MAPK14/p38-MAPK. This kinase can be activated by insulin, and is necessary for the expression of glucose transporter. Expression of RAS oncogene is found to result in the accumulation of the active form of this kinase, which thus leads to the constitutive activation of MAPK14, and confers oncogenic transformation of primary cells. The inhibition of this kinase is involved in the pathogenesis of Yersinia pseudotuberculosis. Multiple alternatively spliced transcript variants that encode distinct isoforms have been reported for this gene.

Species: Rabbit**Isotype:** IgG

Storage/Stability: Store at -20°C or -80°C. Avoid freeze / thaw cycles. Buffer: PBS with 0.02% sodium azide, 50% glycerol, pH7.3.

Synonyms: MEK3; MKK3; MAPKK3; PRKMK3; SAPKK2; SAPKK-2;**Immunogen:** Recombinant protein of human MAP2K3**Purification:** Affinity purification**Reactivity:** H M R**Applications:** WB**Molecular Weight:** 39kDa**Swiss-Prot No. :** P46734**Gene ID:** 5606

For Research Use Only