

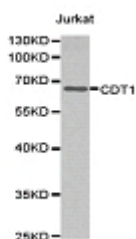


CDT1 Polyclonal Antibody

E90555

- Catalog Number:** E90555
Amount: 100ul
Background: The protein encoded by this gene is involved in the formation of the pre-replication complex that is necessary for DNA replication. The encoded protein can bind geminin, which prevents replication and may function to prevent this protein from initiating replication at inappropriate origins. Phosphorylation of this protein by cyclin A-dependent kinases results in degradation of the protein. [provided by RefSeq, Mar 2011]
Species: Rabbit
Isotype: IgG
Storage/Stability: Store at -20oC or -80oC. Avoid freeze / thaw cycles. Buffer: PBS with 0.02% sodium azide, 50% glycerol, pH7.3.
Synonyms: DUP; RIS2
Immunogen: Recombinant protein of human CDT1
Purification: Affinity purification
Reactivity: H M R
Applications: WB
Molecular Weight: 60kDa
Swiss-Prot No. : Q9H211
Gene ID: 81620

WB 1:500 - 1:2000



Western blot analysis of extracts of Jurkat cell tissue,
using CDT1 antibody.

For Research Use Only