



## PRKCI Polyclonal Antibody

E90618

**Catalog Number:** E90618**Amount:** 100ul

**Background:** This gene encodes a member of the protein kinase C (PKC) family of serine/threonine protein kinases. The PKC family comprises at least eight members, which are differentially expressed and are involved in a wide variety of cellular processes. This protein kinase is calcium-independent and phospholipid-dependent. It is not activated by phorbol esters or diacylglycerol. This kinase can be recruited to vesicle tubular clusters (VTCs) by direct interaction with the small GTPase RAB2, where this kinase phosphorylates glyceraldehyde-3-phosphate dehydrogenase (GAPD/GAPDH) and plays a role in microtubule dynamics in the early secretory pathway. This kinase is found to be necessary for BCL-ABL-mediated resistance to drug-induced apoptosis and therefore protects leukemia cells against drug-induced apoptosis. There is a single exon pseudogene mapped on chromosome X. [provided by RefSeq, Jul 2008]

**Species:** Rabbit**Isotype:** IgG

**Storage/Stability:** Store at -20°C or -80°C. Avoid freeze / thaw cycles. Buffer: PBS with 0.02% sodium azide, 50% glycerol, pH7.3.

**Synonyms:** DXS1179E; MGC26534; PKCI; nPKC-iota

**Immunogen:** Recombinant protein of human PRKCI

**Purification:** Affinity purification

**Reactivity:** H M R

**Applications:** WB IHC IP

**Molecular Weight:** 68kDa

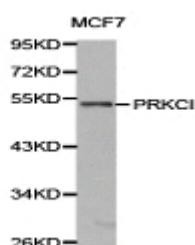
**Swiss-Prot No.:** P41743

**Gene ID:** 5584

WB1:500-1:2000

IHC1:50-1:200

IP1:50-1:200



Western blot analysis of extracts of MCF7 cell tissue,  
using PRKCI antibody.

**For Research Use Only**

**For Research Use Only**