



## CDC37 Polyclonal Antibody

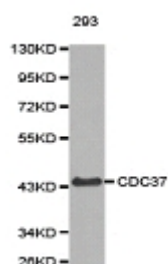
**E90644**

- Catalog Number:** E90644  
**Amount:** 100ul  
**Background:** Cdc (cell division control) family of proteins are regulatory proteins involved in the processes of cell cycle and proliferation. Cdc37, migrated as a protein of 50 kDa in SDS PAGE, is a co-chaperone protein that recruits several immature client kinases to Hsp90 for proper folding. It functions in association with Hsp90, although little is known of its mechanism of action or where it fits into a folding pathway involving other Hsp90 cochaperones. Cdc37 up-regulation is a common early event in some localized human cancers. But, the effect of Cdc37 dysregulation in human cells is unclear.  
**Species:** Rabbit  
**Isotype:** IgG  
**Storage/Stability:** Store at -20oC or -80oC. Avoid freeze / thaw cycles. Buffer: PBS with 0.02% sodium azide, 50% glycerol, pH7.3.  
**Synonyms:** CDC37A; P50CDC37; Hsp90 co chaperone Cdc37;  
**Immunogen:** Recombinant protein of human CDC37  
**Purification:** Affinity purification  
**Reactivity:** H M R  
**Applications:** WB IHC IF  
**Molecular Weight:** 44kDa  
**Swiss-Prot No. :** Q16543  
**Gene ID:** 11140

WB 1:500 - 1:1000

IHC 1:50- 1:100

IF 1:20- 1:50



Western blot analysis of extracts of 293 cell tissue,  
using CDC37 antibody.

**For Research Use Only**