



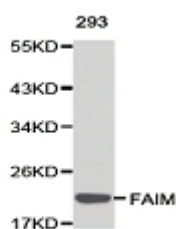
## PSMG2 Polyclonal Antibody

E90680

- Catalog Number:** E90680  
**Amount:** 100ul  
**Background:** PSMG1 is a chaperone protein which promotes assembly of the 20S proteasome as part of a heterodimer with PSMG2. The PSMG1-PSMG2 heterodimer binds to the PSMA5 and PSMA7 proteasome subunits, promotes assembly of the proteasome alpha subunits into the heteroheptameric alpha ring and prevents alpha ring dimerization.  
**Species:** Rabbit  
**Isotype:** IgG  
**Storage/Stability:** Store at -20oC or -80oC. Avoid freeze / thaw cycles. Buffer: PBS with 0.02% sodium azide, 50% glycerol, pH7.3.  
**Synonyms:** PSMG2;CLAST3;HCCA3;HsT1707;MDS003;MGC15092;PAC2;TNFSF5IP1 ;  
**Immunogen:** Recombinant protein of human PSMG2  
**Purification:** Affinity purification  
**Reactivity:** H M R  
**Applications:** WB IHC  
**Molecular Weight:** 29kDa  
**Swiss-Prot No. :** Q969U7  
**Gene ID:** 56984

WB 1:500 - 1:2000

IHC 1:50- 1:200



Western blot analysis of 293T cell lysate using PSMG2 antibody.

**For Research Use Only**